

The Baltic Sea

3rd Edition 2010
ISBN 978 184623 187 2

Supplement No.5
Supplement Date: March 2015

This replaces all previous supplements



Caution

Every effort has been made to ensure the accuracy of this supplement. However, it contains selected information and thus is not definitive and does not include all known information on the subject in hand. The authors, the RCC Pilotage Foundation and Imray Laurie Norie & Wilson Ltd believe this supplement to be a useful aid to prudent navigation, but the safety of a vessel depends ultimately on the judgement of the navigator, who should assess all information, published or unpublished, available to him/her.

With the increasing precision of modern position fixing methods, allowance must be made for inaccuracies in latitude and longitude on many charts, inevitably perpetuated on some harbour plans. Modern surveys specify which datum is used together with correction figures if required, but older editions should be used with caution, particularly in restricted visibility.

This supplement contains amendments and corrections sent in by a number of cruising yachtsmen and women, in addition to those culled from official sources such as *Notices to Mariners*.

Note where details have been modified in this text do please remember to alter them on the appropriate plan.

This Supplement is cumulative. The most recent information is printed in blue.

Author's Caution

It must be emphasised that none of the charts, plans or sketch plans shown in this guide should be used for navigation, nor should they be in any way considered as substitutes for the official charts and other nautical reference materials which every vessel is obliged by international law to have on board.

In some places plotters can provide more detail than charts (depending on which chart series you are using). However it should not be forgotten that electronic components do fail and GPS satellites can be damaged by meteorites etc, or compromised by cyber interference. Thus the paperless navigator could be placing his vessel in danger in these complex rocky areas.

You will see many locals outside the marked channels but your insurance company may not be so impressed.

Acknowledgements

Information for this supplement has been gratefully received from Graham and Fay Cattell, Nicholas Hill, Stuart Carnegie, John de Trafford, Jamie Heron, Vladimir Ivankiv, Bobby Lawes, Michael Lewin-Harris, Richard Marsh, William Pedder, Mike Pidsley, Jeremy Parkinson, John Sadd, Stephan and Madeleine Strobel, Jill Vasey, Bruce Weir, Antony Wells, Alan Wilson and Nigel Wollen.

Introduction

Page 1 The Baltic Sea, Column 2, paragraph 3
Algae can be toxic, especially if it develops blue patches.

Page 4 Currency
Estonia in 2011, Latvia in 2014 and Lithuania in 2015 have also adopted the Euro.

Page 6 Water quality
You will often need your own hose and the connector may be a bayonet type.

Page 9 Berthing systems and etiquette
In some marinas payment may be made at 'parking meters' which often gives access to power and water. While many marinas cater for a max beam of 3.5m larger yachts should not be deterred. Old fishing harbours are often underused due to the sharp reduction in fishing fleets thus freeing alongside berths albeit requiring fender boards and large fenders.

Pages 10, 13, 55 & 112 Holding tanks
Pump out stations are becoming more widely available. As yet there are no laws which compel the fitting of holding tanks in foreign vessels but legislation is being introduced to forbid the discharge of sewage by anyone. eg. Germany 2012 it is not permitted to wash boats in the water. Sweden 2015 discharge now forbidden in all Swedish territorial waters.

Page 11 Bottled gas
Camping Gaz available at Ystad, Kalmar, Nynashamn Saltsjobaden and Stockholm in Sweden and calor propane bottles can be filled at Nyköping. Camping Gaz also available via NJK in Helsinki.

Chandlery
Chandlers on the east coast of Sweden are quite scarce and of varying quality. Good chandlers reported at Ystad, Kalmar, Nynashamn and Sundsvall.

Germany

Page 16 Radio communications and weather information
Website dwd.de gives forecasts and charts. Select: "weather and warnings" then "Marine meteorology" then "current weather at sea".

Page 17 The Kiel Canal
The signal that yachts may enter the locks at Brunsbüttel or Holtenau is an occulting white light.
In emergency call *Kiel Kanal 2* on VHF Ch 02 if between Brunsbüttel and Breiholtz or *Kiel Kanal 3* on VHF Ch 03 if between Brieholtz and Holtenau.

Brunsbüttel Plan

The marina and berths shown on the north side of the canal can become very crowded in the evenings so it is a good idea to plan a transit so as to be able to reach Rendsburg (W to E) or Cuxhaven (E to W) before sunset.

Page 19

Canal dues remain at €18.

Page 19 Holtenau Plan

There is a waiting pontoon for yachts on the north side of the canal at the eastern end of the piles and just west of the ferry.

Page 20

Col 1: The berths 1km further east from Brunsbüttel on the northern bank are no longer available.

Dückerwisch siding is not suitable for vessels longer than 13m.

The Gieslau Kanal provides a peaceful jetty berth but secure well in view of the surge from ships in the main canal.

Page 22 Laboe Plan and Page 25

Fuel is available at the innermost end of the northernmost part of the harbour beyond the ferry berth. Come alongside to the right of the yellow piles with very high staging. The fuel berth closes at 1400 daily including weekends.

Page 25 Düsternbrook

The excellent shopping centre is 2 miles to the south of the harbour. The marina has toilets, showers, WiFi and bicycle hire but no fuel, chandler, boat repairs or shops. Nearest alongside fuel is 6nm further up fjord at Laboe or Strande.

Page 34 Travemünde

General facilities Fishing Harbour now has water/electricity on the stagings (mostly big box berths) and showers/toilets ashore by the Harbour Office.

Extensive nature walks immediately south from Passanthafen.

Page 35 Eric-Warburg bridge

½M below Lubeck, opening times from ☎ +49 451 400 4875.

Page 41 Darsser Ort

Darsser Ort is now permanently closed.

Page 44 Stralsund (box)

Harbour communications Stralsund VTS now renamed "Stralsund East". Telephone now +49 3129 9662. VHF channel changed to Ch 67, working 24/7.

See www.worldvtsguide.org for more information.

Page 44 Stralsund

Approach See www.sailing-guide.eu and click on "bridge opening times" for up to date information.

Page 45 Stralsund Plan and Page 47 Berthing

Yachthafen an der Werft no longer exists.

Page 47 Hiddensee

There are charming designated anchorages E of the island.

Page 49 Sassnitz

Sassnitz Port Authority tel no changed to +49 383 92 661570, mobile no +49 162 2370844.

Greifswald/Greifswald Wiek

New flood barrier under construction at entrance to River Ryck (Aug 2014). Museumhafen quay under partial

reconstruction (Aug 2014). Electricity available but very limited access to fresh water.

Page 53 Wolgast

The small marina north of the lifting bridge is shallow – 2m. There is a new footbridge which leads almost to the town centre. **For opening times at Wolgast and Zecherin bridges see www.sailing-guide.eu and click on "bridge opening times"**.

Ueckermünde

The correct position of the Landfall buoy is 53°46'·3N 14°05'·8E. At the SHM buoy UE3 alter course to starboard on to 240° to pick up the secondary channel to the river.

Five lines from the end: Delete 'is' and insert 'may be'.

Zecherin bridge

The next opening time is broadcast on Ch 9.

Denmark

Page 55 Top line

Delete 'Nelson's' and insert: 'the'.

Pages 56 & 59 Plans

The latitude scale on these two plans is approximately 3M too far N and the longitude scale is approximately 10·5M too far E. The plan on page 73 agrees with the Danish charts.

Page 57 Pilots and cruising guides

www.havnguiden.no provides a large number of harbour guides for Denmark on various platforms. Where not available in English the pictures are most helpful.

Page 77 & 82 Plans

On both top plans Ebeltøft should be marked approximately 8M to the ESE.

Page 64 Rødvig

All the berths in the yacht harbour are 3·4m wide apart from a few in the SE corner. Beamier yachts may find a berth in the fishing harbour. The facilities are good but at a distance.

Fuel is available in the Yacht Harbour not the main harbour.

Page 68 Copenhagen, Nyhavn

The HM may be contacted on ☎ +45 2178 0013. The area above the bridge is now reserved for permanent berth holders. Pay at hotel on SW corner of the bridge.

Christianshavns Kanal

Add: ☎ +45 4096 3772

Page 69 Copenhagen

Margretheholm marina – see plan on page 68. Larger yachts may be well advised to berth outside the marina alongside against the boatyard wall.

Christianshaven Kanal – There are two alongside marinas here. The Wilders Plads Marina is reported to have good facilities but needs to be booked in advance.

Page 71 Helsingør

Yachts over 12m can be accommodated in the South Harbour by prior agreement with the harbourmaster.

Page 75 Hammerhavn

Fuel no longer available (except from petrol station at Allinge 2 miles away). Electricity, water, good showers, WiFi, café.

Allinge

Fuel is no longer available except at petrol station. Shore power and showers available. Free WiFi in café on quay.

Gudhjem South

Diesel from garage near top of hill.

Page 84 Vesterø, General

Vesterø reported exceedingly busy mid July 2014.

Page 87 Mariager Fjord

There are said to be many visitors' buoys in the fjord. Some in the lower reaches are rather exposed but those west of Hadsund are more sheltered. Pleasant, relatively open anchorage in fjord west of Hadsund. Protected from WNW through ESE, with good holding in 5m.

Page 92 Middlefart

Visitors' berths are available in a new marina 1M east of the Gammelhavn adjacent to the library and tourist office.

Page 93 Faborg

The main yacht harbour has been extended with 100 new berths.

Page 95 Dyvig

The buoyed entrance channel is reported to have silted to 2-6m with the best water nearer to the green sticks.

Page 96 Sonderborg

The next opening time for the Christian X bridge is not always displayed and the telephone is no longer available. Use VHF Ch 12 or 13 or ring the HM ☎ +45 74 42 27 65

The alongside berths close to the bridge now have all the usual facilities.

Page 97

Island of Samsø (shown on plan) has good marina in Ballen, SE corner.

Page 99 Kerteminde, Facilities

In the commercial harbour the grain silo has been demolished and while fuel is no longer available there it can be obtained from two garages close to the marina.

Page 101 Nyborg

Berthing

Visitors should use the Osterhavn with larger yachts to the Vesterhavn.

Page 103 Korsør

A westerly swell in even moderate weather makes the Commercial Harbour uncomfortable for yachts. Being designed for big ships there are few facilities for yachts which are recommended to use the Yacht Harbour.

Page 105 Nakskov

Danish chart 142 SE is needed particularly at night.

Page 106 Vordingborg

Approach

From the Trellegrund E cardinal is marked with port and starboard buoys.

Berthing

Berths beyond the boatyard are in soft mud.

Sweden

Page 110 Internet sites

See also page 371. Weather sites. www.smhi.se is a Swedish site in English which includes sea temperature and wind speeds in m/s.

Page 113 Pilots and cruising guides

www.havneguiden.no provides a large number of harbour guides from the Norwegian border round to N of Stockholm on various platforms. Where not available in English the pictures are most helpful.

Page 119 Landskrona

The first inlet to port is the Landskrona Yacht Club and is recommended if there is space on the W side. The next inlet is the Nyhamn and both give easy access to the city and castle.

Page 131 Göteborg

At Langedrag the marina office provides cards for a 15% discount at the Sea Sure chandlers beyond the Co-op Konsum supermarket – two stops by tram.

Page 135 Marstrand

The insert on the plan should read: See plan on page 134.

It is also possible to anchor S of the main harbour – see chart 9321 NW.

Page 138 Smögen

This *gästhamn* can become rowdy during high season.

Page 140 Hamburgsund

The supermarket is now reported to be rather better than basic for supplies.

Strömstad

Seaward side of long east/west pontoon on south side of South harbour, linking Skurve Island to the quays, provides a useful short term berth for shopping and visiting the town. Good chandlery with good stock of charts.

Page 151 The Falsterbo Kanal

Now does not open 0700, 0800 and 1830. In winter opens only 0630 and 1830. Free WiFi and free bike hire. Falsterbo Bridge uses VHF Ch 11.

Page 153 Ystad

Depth now 3m. The large green elevator is no longer prominent being surrounded by mainly yellow silos.

The marina can accommodate yachts up to 45'. The N and NE walls are available for larger vessels but beware of ferries turning in the basin. Visitors' berths on pontoons on west side of harbour or alongside adjoining quay. Free WiFi.

Page 154 Simrishamn

General Correction: St Nikolai Kyrka church is 13th-century, NOT 12th-century.

Ferry service to Bornholm no longer operational.

Berthing The first pontoon is for boats greater than 12m LOA and 4m beam. Depth shown as 1.6m but not less than 2.0m reported in Aug 2014. On second pontoon, the outer 8 berths signposted depth 2.5 m and next 6 berths 2.0m

Services No fuel berth, but available from petrol station in town.

Page 155 Hanö (plan)

Delete "ferry" shown on peninsular quay in centre of chartlet; the Nogersunds ferry only uses berth in NE corner of harbour.

Page 156 Hanö

Facilities now include fuel, showers, toilets, WiFi, electricity and water at most berths.

Page 157 Karlskrona

Approach and Entrance On approach b, the Hasslö swing bridge opens for 10 minutes on the hour ☎ +46 455 332 240.

Berthing at Tallebryggan has been much extended and can now accommodate larger yachts. New telephone ☎ +46 455 303 141. Pontoon fingers "too narrow to walk on" have been replaced with 9m pontoons that you can walk on.

Page 159 Utklippan

Now under new private ownership. Subject to the indicated depths and early arrival in season there is space for larger yachts.

Page 163 Kalmar

General The USSR submarine referred to is no longer there.

Page 165 Kalmar

Approach and entrance Larger yachts may berth alongside the NE wall. There are now additional visitors' berths (stern to a buoy, bow to quay) near the fuel pontoon in the Gamlahamnen. These berths can be reserved in advance at www.dockspot.com.

Services for Yachts Sailmaker (North Sails) near harbour.

General facilities Co-op shopping centre on north side of harbour closed (Aug 2014). Nearest supermarket is in the town.

Page 166 Oskarshamn

After Oskarshamn, the village of Figeholm (57° 22'·3 16° 33'·2) is well sheltered. Moor bows to quay with stern buoy. Showers, water, electricity, WiFi, fuel pontoon, Co-op and restaurant.

Page 171 Blå Kusten, Harstena

After "modest store and smokery" insert: and restaurant not open until after mid-summer.

Page 174 Loftahammar

It is no longer appropriate to 'go alongside the small jetty NW of the inner red prick'.

Page 175 Arkösund

In 2012 it was reported that the pontoon berths N of the village are no longer available to visitors. Instead a new 200 berth Pro-Marina *gästhamn* has been built W of the village pier with bows to mooring from buoys (**berth alongside pontoons in mid June 2014**). May be uncomfortable in southerlies (**avoid outer pontoon**) but otherwise sheltered. All facilities have now been moved S with the HM's new office at the inner end of the village pier. Improved facilities include water and power on the berths, fuel and pump-out on the N of the pier, limited chandlery with Camping Gaz, sauna and Wi-Fi. (**No WiFi mid-June 2014 but it is available at the pub in the village, beyond the supermarket.**)

Page 177 Oxelösund

Approach and berthing Visitors' pontoons on outside reported very uncomfortable in winds from SE. West harbour sheltered but full of resident yachts.

Page 178 Nyköping

Approach and berthing The approach channel has been widened.

The first marina on north side of channel has no visitors' berths. It is followed by a long canoeing area and then the

guest harbour itself, which is opposite another private marina to the south. Turn North from the channel just before the Easterly cardinal mark in the guest harbour entrance.

Fuel is available 24/7 from automatic pumps on south side of channel, just outside southern marina. Wifi available on all berths.

Gas cylinders, inc Calor Propane, can be refilled at Gasol Macken, behind the small Chandler in Spelhagsvagen.

General Good lunches available at catering college across road from marina.

Insert new harbour:

Trosa

58°54'·4N 17°33'·1E

Swedish chart 6173NE

More attractive than Oxelösund or Nyköping but further from Skavsta airport.

Being closer to Stockholm this well preserved town experiences a very considerable inflow of summer householders. The Gästhamn is on the east side with 140 bows to or alongside berths in 2–3m but with silting soft mud.

Full services, including a Watski's chandlery, are available and town facilities are within 500m. A good anchorage may be found in Lagnnöviken bay to the south west of the entrance channel.

Details from www.trosahamn.se or ☎ +46 (0)156 161 11.

Page 183 Nynäshamn

A further 100 fully serviced berths have been added behind a huge new wave barrier on the N of the marina.

Page 184 Baggensstaket

Approach Ferries also use Ch 16.

Page 185 Saltsjöbaden

Although correctly marked on the plan the Pälänsviken marina is not part of Saltsjöbaden Bätklubb. The small kiosk no longer exists.

Services for yachts Fuel dock adjoining KSSS marina stocks Camping Gaz. WiFi available. Showers and washing machine.

Page 186 Bullandö

59°17'N 18°39'E

A large and well equipped marina with all facilities just W of the NE/SW route. The *gästhamn* is relatively small. Access is limited by a 20m bridge but there is an alternative route for larger yachts via the pretty Älgöfjärd.

The inner and middle Skärgård are very well served by fast local ferries with routes radiating from Stockholm, Vaxholm and Stavnäs.

Page 193 Naishamnen Marina

Can be subject to more wash than the Wasahamnen.

Page 194 Hammarbyleden Kanal

The official bridge clearances have been reduced by 0·3–0·9m. The opening times have changed and should be checked locally.

Page 197

While visitors often use the term 'Gulf of Bothnia' the locals generally refer to the Sea of Bothnia (Bottenhavet) in the south, The Quark (Kvarken) in the narrow centre and the Bay of Bothnia (Botten Viken) in the north.

Page 200 Storjungfrun

Has been found to be uncomfortable and dangerous to exit in a moderate Southeasterly.

Page 203 Härnösund

Dahlman Marin some 500m across the bay from Södra Sundet *gästhamn* is a very helpful boatyard ☎+46 06 11 55 66.

Page 205 Mjälton

The natural lagoon is known as Baggviken.

Page 208 Norrbyskä

Both moorings are sheltered from the S and E but the southern one is exposed to the W.

Page 215 Huvön

65°40'·7N 22°53'·6E
Chart S 412

A spectacular anchorage in the Haparanda archipelago. Approach from the north well clear of the NW corner and anchor in 4m with good holding near the head of the bay. Open to the east. No facilities but outstanding walks.

Insert new harbour:

Båtskärsnäs

65°47'·15N 23°25'·7E
Chart S 412

Said to be the largest boatyard in the Bay of Bothnia and Gästhamn with 40 visitors' berths in 2–6m. Service centre for the Swedish Coastguard vessels.

80-ton crane, and good support services but few facilities, no stores or public transport.

Finland**Page 220 Entry by yacht**

Col 2: Insert new penultimate paragraph:

When leaving Finland for Russia it is worth having up to six copies of your Crew List stamped for the paper hungry officials at your destination.

Frontier Guard Stations

The telephone number at Santio is now ☎+358 71 372 6110

Page 224 Lin Röyttä

Should be spelt Iin Röyttä. Very crowded at Mid-Summer and Harvest.

Page 226 Kokkola

63°49'·80N 23°02'·50E

The Yxpila boatyard is a Nautor Swan service centre and is reported to provide excellent winter storage facilities
Email yby@anvianet.fi or ☎+358 447 364 434

Mustakari

The correct coordinates are 63°51'·8N 23°07'·07E

Page 227 Vaasa

On the final approach even if depth allows you to go straight towards the yacht clubs on the E side beware of the overhead power cables. On *chart 819.1* the height is shown as 19m but on the base of the pylon 17m. If in doubt follow the indicated channel towards the town quay.

Page 229 Kristiinankaupunki

Top line. Delete: 'Completely' and after 'harbour' insert 'but exposed to the S'.

N of Repossaari

Beware of fishing nets outside the cardinals and up to 10M

offshore. Usually marked with end buoys and white floats up to 500m long and with surface lines.

Rauma (Raumo)

The correct position is 1° further north at 61°8'·5N 21°28'·4E

Page 234 Mariehamn

Communications and Travel WiFi in west harbour now free (included in berth fees).

Page 235 Lemströms Canal

The bridge opening times vary throughout the season with the day's final opening being 10 minutes before the hour.

Page 236 Plan

The correct spelling is 'Kastleholm' as in the text on page 237.

Page 237**Kastelholm**

In approaches, there is a cable across channel 3/4M south of marina, clearance 22m.

Marina facilities now include café, pump-out station, fuel, sauna, washing machine/drier

Bomarsund

The stern buoys are marked as being of limited weight.

The box around the approaches to Mariehamn should refer to page 232 not 152.

Page 238 Husö

In 2010 it was reported that the island has changed hands. No facilities or services are available at the harbour which is closed to visitors.

Kökar

Now has pump-out station and diesel.

Page 239**Utö**

There is now a small new marina (8 berths) run by the Hav Hotel, located near the harbour entrance to NW of main quay.

Jurmo

Fish quay no longer operational (used for storage of fish farming gear).

Page 239-241 Route 5

Rosala Island, Notholm, is suggested as an additional port on Route 5. 20+ berths suitable for yachts up to about 45 ft LOA on stern buoys plus 2 berths on L shaped quay for larger yachts. Very sheltered anchorage. Shop/café, pump-out station, fuel, water, electricity. Approx 2km walk/cycle to Viking Centre www.rosala.fi.

Page 243 Nädendal (Naantali)

Col 1, paragraph 2: The bridge on the southeastern route is reported to have only 11m clearance.

The western approach is now reported to be very well marked with red and green stakes at pinch points and a depth of not less than 2·9m but the ferry at Merimasku has been replaced with a bridge of 16m.

Page 245 Pargas (Parainen)

60°16'·13N 22°18'·30E
Chart 739

At the N end of Iso Terv this six year old boatyard is based around an old sawmill. Well reported on for winter storage in heated or unheated sheds or outside. Capable maintenance and very good English spoken. Turku is 30

minutes by bus but the yard is across the water from the town of Pargas which has it's own *gästhamn*.
www.marinapargas.com or ☎ +358 440 663 031

Page 250 Tammisaari

Marina berths suitable for yachts to about 40ft LOA. (WiFi available) Larger yachts can lie against old (disused) commercial quay to NE of marina. No facilities on quay except one electricity point at SW corner.

Page 251 Porkkala

Customs jetty has been removed. Very sheltered anchorage in pool beyond (N of pontoons) in 5m good holding, mud/silt.

Page 255 Helsinki

Approach and entry Santahamina Bridge now operates on the hour and Hr+30 mins, not HR+/- 15mins (Aug 2014).

Page 256 Helsinki

Formalities

Add: ☎ +358 2 0410 6400 to arrange an arrival time.

(Right hand column 4th para) The HMKV tel no changed to *mobile* +358 40 5088 344 (Aug 2014).

Berthing

At the HMKV there are limited opening hours but facilities include fuel, showers, laundry, water, electricity and a mast crane.

Page 259 Porvoo

General facilities Tourist Office now located on west side of river (take the footbridge), in the Art Factory centre.

Page 262 Kotka

New Port Kotka Marina

60°56'·8N 26°56'·15E

The plan on page 263 shows 'Yacht pontoons' on the northwest side of Kotka island.

These have been re-aligned and in 2010 provided 50 finger or alongside berths up to 30m including space for visitors. With the exception of fuel, which is available nearby, full marina, chandlery, repair and storage facilities are onsite with a further 200 berths planned. Convenient for all town services.

Details from www.kotkayachtstore.fi or ☎ +358 (0)5 225 0074.



View N towards the city, over New Port Kotka marina

Page 265 Hamina

Approach and entrance Southbound (outward flowing) current from river reported when mooring up.

Page 266 Haapasaari Island (plan)

Buoyage now quite different from chartlet. Buoyed channel is to the east of harbour entrance. The cardinal marks shown in picture are now red/green spar buoys.

Page 267 Santio Island

A notice on the berth gives the Customs and Immigration opening hours and contact numbers.

Customs working hours 0800-2200 (2014).

☎ +358 295426110

(Photo, bottom left) Red sheds are no longer there

The Saimaa Lakes

Charts and Guides Useful information on www.fta.fi (which appears to be English version of www.fma.fi): select "transport network" then "waterways and canals".

General

Replace the final sentence:

The narrow leads are well marked by buoys and frequent transits. Many islands have 'nature harbours' with free sauna, nature toilet, barbeque and wood to be cut, open to all and scrupulously clean.

Page 269 Saimaa Canal

Add: In the locks mooring is to floating bollards recessed into the walls. As far as possible moor at the downstream end of the locks for minimal turbulence using a single midships warp upstream or quarter warp downstream.

Russian Customs at Brusnitchnoe, Russian Immigration at Palli and Finnish Customs and Immigration at Nutjamaa each have to be cleared.

No longer necessary to contact the Board of Management well in advance, or at all. All required information is on website www.fta.fi

There are no longer any canal fees for yachts

There is now a (Russian operated) diesel station just north of Brusnitchnoe lock on East bank. Accepts payment in Roubles or Euros (but not credit cards).

Page 270 Lappeenranta

Berthing Linnoitukse Laituri is for yachts over 13m (not 15m). Minimum charge for overnight is Euro 50 (2014 season).

Page 270 Puumala

Road bridge height is charted at 24.5m.

There is now a supermarket right on quay.

www.puumala.fi now has a full English version of its website.

Russia

Page 273 Security

If taking an official taxi, always negotiate a price first to avoid excessive charges.

End of paragraph two, delete: 'caught in the crossfire' and insert 'involved'.

Formalities

There is now no difficulty in approaching St Petersburg from Estonia provided Russian waters are entered via the shipping channel south of Gogland. As the border between Russia and Estonia is the subject of contention it is best to keep well to the west of where you think the border is until the shipping channel is entered.

Stay within the marked shipping channels and do not cut corners. To avoid being approached by a Russian Patrol Vessel it is best to call *Russian Coastguard* on VHF Ch 16 or 74 when crossing the border stating name of vessel, destination port, nationality, number on board and last port.

Last paragraph: the correct spelling is 'Smolninskiy Raion'.

Page 275 Vouchers – About the yacht

Add: engine make and number.

Page 275 Prohibited Substances

A list of substances prohibited in Russia can be found at www.erowid.org/psychoactives/law/countries/russia/law_russia_schedules.shtml

To be entirely sure, all visitors are strongly recommended to show all medications to Customs and to retain on board copies of any medical prescriptions.

Page 276 Shopping

Most supermarkets accept credit cards as well as cash (roubles). State shops no longer exist.

Communications

Vyborg now has its own telephone code – 81378.

Page 281 Vyborg

The Vyborg Sea Yacht Club is now known as Yacht Club Favorit.

Public holidays

City Day in St Petersburg is now usually celebrated on the first Sunday after the 27th May.

Russian Unity Day is on November 4th (not 7th).

Page 279–283 Vyborg to St Petersburg

Seven yacht harbours are now open to visiting yachts. Customs/Immigration must first be cleared at Vyborg or Kronshtadt and notice of intended ports of call given. It is also wise to advise your sponsor in advance. If going S after visiting these harbours advise Kronshtadt by VHF Ch 6 (call sign *GRANIT* pronounced Graneet) as you pass. If going N from St Petersburg advise Kronshtadt by VHF as

you pass, visit your pre-advised harbours and berth at one of the Vyborg harbours. In either case check out of Customs/Immigration as you leave Russia. See details of yacht harbours and Customs posts on plan. In view of the frequently changing regulations readers are asked to contact Vladimir Ivankiv for the latest details.

Email vladimir@sailrussia.spb.ru or ☎ +7 812 510 7602

See plan below.

Page 279 Vyborg

Approach

In 2010 the inshore passage to and from St Petersburg via the Proliv B'yerkësund was found to be practical – see plan on page 278.

~~There are no longer any military check points but foreign yachts are still not permitted to stop or to enter the port of Primorsk (although this is allowed by land).~~

Page 283 St Petersburg

General

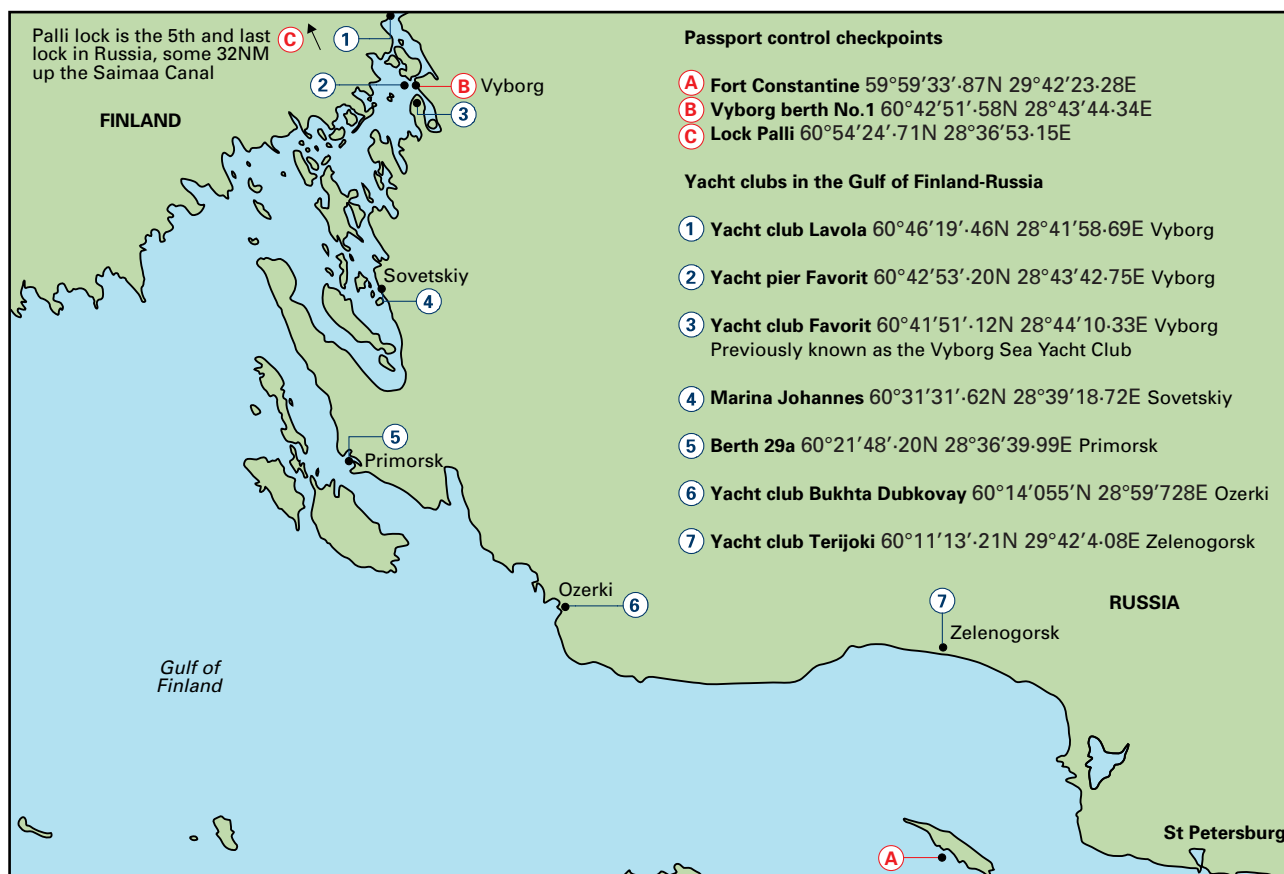
The Admiralty houses the Naval Academy and is not open to visitors. The Kirov Theatre is now called the Mariinski Theatre.

Approach and entrance

All visiting yachts should clear Customs and Immigration at Fort Konstatin on Kronshtadt at 59°59'·7N 29°42'·3E. Open for Immigration 24/7 but only 0900–2100 for Customs. However as arrangements change contact Vladimir Ivankiv ~~or consult the Finnish Frontier Guards when clearing out from Santio or Haapasaaari.~~

Paragraph 2: The southern flood defence barrier was completed in 2011 and there is now only one channel through it.

Paragraph 3: Russian Patrol Vessels – see page 273 above.



YACHT FACILITIES IN RUSSIA

Paragraph 4: Add: 'alternatively call Vladimir Ivankiv when the southern flood defence barrier is abeam.'

Page 285 Formalities

The low concrete quay runs SW/NE but note that the NE end shoals and extra fenders may be needed as there is considerable passing wash.

For arrival or departure try to arrive at the customs quay by 1300 to leave plenty of time to complete all the paperwork before closure.

Page 286 Berthing

~~In 2010 three marinas were licensed to host visiting yachts but this situation may change and Vladimir Ivankiv's advice should be sought when booking a berth. The three marinas are:~~

- The Central River Yacht Club ~~now~~ has alongside berths, three restaurants and free Wi-Fi. Full facilities are restored for 2012. Mr Ivankiv has the use of an office and facilities here.
- The Krestovskiy Yacht Club at 59°57'·97N 30°14'·78E. This marina was opened in 2010 and is situated on the opposite side of the Malaya Nevka River and to the east of CRYC. The address is Yuzhnaya Doroga, 4 korp. 1, Krestovskiy Ostrov, St Petersburg. ☎ +7(812) 715 3888. VHF Ch 77. There is 24hr security and berthing is bows to pontoons with stern buoys with alongside berths for larger yachts.

Facilities include showers etc, electricity, water and free Wi-Fi. Various grades of restaurant and a metro station are within a 10 minute walk. Dues are on a par with CRYC. In 2012 it was reported that the disco at KYC was very noisy indeed and at the CRYC is not much better. Take ear plugs!

In theory foreign yachts may berth at any of the St Petersburg marinas, but of these only Central River Yacht Club and Krestovski Yacht Club are suitably located.



Krestovskiy Yacht Club marina V Ivankiv

~~The Lenexpo marina at 59°55'·94N 30°13'·90E (see photograph on page 285) but it currently lacks berthing or facilities.~~

Page 287 Services for yachts

In 2012 it will be possible to have gas bottles refilled but as the filling station is some distance away this should be regarded as for emergencies only.

General facilities

The Kirov Ballet is now called the Mariinski Ballet and the correct telephone number of the American Medical Centre is ☎ +7 812 933 770.

Although there may be bureaucratic difficulties from time to time there is a route through the White Sea to the far North – see the RCCPF website *Arctic and Northern Waters*.

Foreign pleasure boats are permitted to sail within Russian inland waterways provided at least one crew member can speak Russian and has a Certificate of Competence but check with Vladimir Ivankiv for the most up to date regulations.

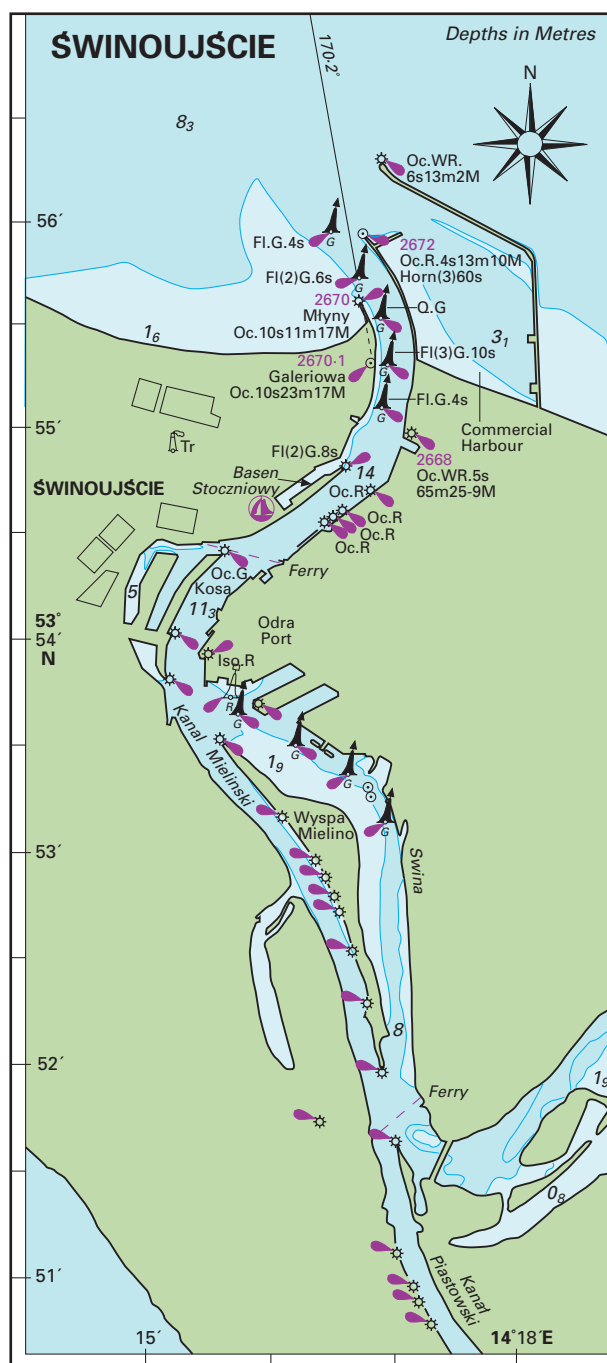
Poland

Page 289 Charts Pilots etc,

Final entry change to *Cruising Guide to Poland* by Jonty & Wyn Howard published by the Cruising Association.

Page 293 Świnoujście

Approach and entrance built immediately to the East of the main entrance shown on the chartlet. (See plan below. Revised November 2015.)



Page 307 Władysławowo

Box Latitude should read 54°48'N, not 58°48'N.

Facilities Add "and buses" after "trains" in bottom line.

Page 312 Gdansk Marina

Change the VHF channel to 12.

Kaliningrad

Page 316 Kaliningrad

Line 1 should read: See location plans pages 315 and 322.

Col 2, paragraph 2: Pionerskiy no longer has a customs post and is now closed to visiting yachts

Paragraph 3: There is now a small marina in Kaliningrad City. See page 319 below.

Page 317 Formalities

Visa requirements and updates are as for Russia and Vladimir Ivankiv can help but the requirement to register passports again if staying longer than three days plus a weekend is now changed in Kaliningrad to seven days plus a weekend.

Page 318 Kaliningrad

Col 1, last paragraph: Provided there is no deviation required to avoid restricted areas a direct route can be taken to the Baltysk Harbour entrance. Sails must be lowered before entering and not raised again until clear of the moleheads on departure. The Morskoy Kanal may only be used by small craft in daylight so arrive at Baltysk during the morning. Call *Baltysk Traffic* to seek permission to transit the Kanal before leaving the Customs post.

Page 319 Kaliningrad

Berthing There is now a small marina in Kaliningrad City harbour at 54°42'·28N 20°28'·76E opposite an oil tanker berth. It has finger pontoon berths of standard width and depth, 24-hour security, electricity and water but no showers and a very basic toilet. For a small tip the security guard will drive one to a fuel station to obtain diesel in cans. No WiFi but free WiFi is available at the Europa Mall in the city centre which can be reached on foot. In 2011 the manager's assistant, Dennis, spoke English. Pionerskiy no longer has a Customs post and is now closed to visiting yachts.

Marina website is

www.marinakaliningrad.ru/engindex.html.

E-mail marina@pvlkd.ru. Manager is Anton Pavloski (June 2014)

Lithuania

Page 321 Regulated Area 117

Second sentence should read: See plan on page 315 and details on page 318.

Page 322 (Box)

Money In 2015 Lithuania adopted the Euro.

Page 323 Klaipeda (box)

Under Harbour Communications add: Coastguard VHF Ch 73 call sign *Impuls 3*.

Page 324 Klaipeda

Berthing

Substantial EU funding has supported the rebuilding of both The Old Castle Harbour and Smiltyne Yacht Harbour. However this has coincided with an explosion in local boat ownership so that The Old Castle Harbour, see

picture on page 325, and the Cruise Terminal Harbour are now entirely given over to local boats.

The Smiltyne Yacht Club harbour is something of a mystery. Although appearing complete resident boats were still at Old Castle and Cruise Terminal harbours while this harbour remained empty in 2013.

Next sentence after: ...river Dane.

Insert: ...but in strong westerly winds the berths are exposed and very uncomfortable.

Beware of large rings in the quayside – good fendering essential. New alongside fuel berth in the Cruise Terminal harbour.

Old Castle Harbour much preferred (July 2014) for yachts under about 40 ft. Swing bridge opens every hour on the hour (24/7) for about 15 minutes.

Latvia

Page 326 Formalities

As a maritime safety matter a 2012 law requires skippers to report arrival and departure at ports by VHF.

Page 327 Practicalities

Money. On 1st January 2014 Latvia adopted the Euro as its official currency.

Page 331 Pāvilosta

A straightforward approach with black and white leading marks on 144.2°, min 3·5m. In 2012 this isolated but charming village was reported to provide 30 berths on finger pontoons and a wooden wall on the S bank with further finger pontoons on the N side. HM $\text{D} +371 349 8581$, *Mobile* 293 77488.

Visitors' finger pontoons are on port side, NOT starboard as stated (July 2014). Fuel available. Quiet alternative to Ventspils.

Page 334 Roja

Berthing In 2012 five new finger pontoons were reported on the N bank, minimum 3·6m. Some alongside pontoons on the S bank.

Page 334 Mersrags

Approach by buoyed channel ~~with sector lights~~. There is a small new marina on the S side with pontoons and stern buoys. The new clubhouse has good facilities and there is a footbridge within 200m to the town.

Two yacht pontoons have been installed on the southern shore and the facilities building has been completed.

Page 335 Engure

The port and starboard hand buoys have been removed in the approach. Yachts should follow the leading marks. Vessels drawing more than 1·5m should seek local advice before entry.

Page 335 Jurmala

From 57°00'·91N 23°55'·82E seven pairs of unlit port and starboard hand markers have been placed in the approach.

In 2010 the Lielupe river entrance was dredged to 3m and it is anticipated that further dredging will take place if needed.

Contact Riga VTS for the latest situation $\text{D} +371 6703 0861$.

Kuiviži

57°47'35N 24°20'75E

Limited berths and new pleasure craft facilities established in the former fishing harbour provide good shelter, a Yacht Club, restaurant and sauna. The approach is liable to re-silt, should only be attempted in daylight and is dangerous in strong on-shore winds.

Latest situation from ☎ +371 6402 4930 or
Email info@kapteinuosta.lv

Page 338 Riga

Andrejosta Yacht Centre has work in hand to replace the quay and pontoon decking and there is now a chandler onsite.

There are supposed to be some berthing and facilities at the Auda YC marina, 57°03'N 24°04'E but it is a long way from the city centre. <http://marinaauda.com/osta/>

Services for yachts The fuel berth at Latvijas Jahta (Pildne) has reopened.

~~Services for yachts — para 2 delete 'Fuel....down river.'~~

~~Add: The only alongside fuel berths are beyond the Daugava and Lielupe bridges so are unapproachable by masted yachts.~~

Skulte

Delete: In 2009....harbour.

Add: Two small yacht pontoons have been installed on the starboard side in the NE corner of the harbour as the early stage of a small marina development.

Estonia

Page 341 Practicalities

Money

On the 1st January, 2011 Estonia adopted the Euro as its official currency.

Internet sites

www.EMHI.ee is an excellent weather site in English.

Page 343 Formalities for those leaving or entering the Schengen Area via an Estonian port

Delete whole paragraph and insert:

Yachts arriving or departing to Russia are recommended to use either Tallinn – 12 border post at Piritä Yacht Harbour ☎ +372 619 1260, GSM +372 504 6454,

Email tallinna.kordon@politsei.ee or Vergi border post in Vergi port ☎ +372 323 1963, GSM ☎ +372 505 2419,
Email ida.kunda.rcc@list.politsei.ee.

Neither is permanently manned thus a request for border inspection should be made with at least one hour's notice.

Information also from Estonian Police and Border Guard Board helpdesk ☎ +372 612 3000, Email ppa@politsei.ee.

Page 349 Virtsu

Virtsu is now for local boats only so visitors should go to Kuivastu on island of Muhu 58°34'4N 23°23'6E. which is a small modern harbour with finger pontoons and good facilities. Car hire available.

Kuivastu

58°34'N 23°24'E

A well sheltered new marina on Muhu. Approach S of ferry terminal, follow buoys and turn hard to starboard at last PHB close to shore, into marina entrance. Berth alongside or on finger pontoons. Usual facilities in terminal and English speaking HM.

Page 350 Haapsalu

Approach and entry This long, complex and shallow entrance is not recommended in darkness.

Page 353

Insert new harbour as follows:

Hiiumaa, Heltermaa

58°52'N 23°03'E

Estonian charts Vol 2.

A new yacht harbour has been included in the re-built ferry harbour providing good shelter, finger berths with water, electricity and other facilities in the ferry terminal.

Contact www.saarteliinid.ee/ports or ☎ +352 52 376 33.

Insert new harbour as follows:

Kardla

59°00'N 22°45'E

Estonian Chart Vol 2

New yacht harbour opened in 2014. All modern facilities, finger berths, water, electricity etc. Whole site being redeveloped with further facilities. Excellent alternative to Lehtma.

Page 354 Sviby (Vormsi)

Small improvements have been made to the yacht harbour.

~~There are plans to redevelop the ferry harbour when funds permit. The yacht harbour will be improved at the same time but will be closed whilst work is under way.~~

Insert new harbour as follows:

Rohukula

58°54'36N 23°25'25E

Estonian charts Vol 2 and AC 2241.

A new yacht harbour has been included in the re-built ferry harbour. Yachts berth in 4m, from stern buoys, behind a newly constructed quay with water and electricity. Other facilities are in the ferry terminal.

Reasonable shelter except in strong NE winds across the harbour.

For details contact www.saarteliinid.ee/ports or ☎ +372 515 5253.

Dirhami

There is a new bar/café and new facilities were under construction in 2012.

Page 355 Lohulsalu

The stern buoys outside the northern breakwater have been removed. Beware of shallows to port inside the entrance around the ramp.

Page 355 Tallinn (Peetri)

Noblessner Yacht Club Marina

59°27'21N 24°43'90E

Situated to the west of the Old City of Tallinn which is about 20 minutes' walk away.

Caution The entrance can be exposed in strong NE winds when the harbour is untenable although an improved wave barrier has now been installed. The harbour suffers some disturbance from fast commercial craft using Tallinn. Finger berths, mostly occupied by resident yachts but with some for visitors in 5m with water, electricity and the usual marina facilities, repairs and storage.

Details from www.noblessner.com or ☎ +372 502 2920.

Page 356

Insert new harbour as follows:

Naissaar

59°33'N 24°33'E

Buoyed approach from the SE to yacht pontoon with stern buoys installed in 2012. Exposed to the S. The island of

Naissaar remains rural, heavily wooded and charming despite being crowded with visiting boats from Tallinn at the weekends. A small hotel lies 2km to the S and there are plans to redevelop the harbour area.

Page 357 Tallinn

59°26'.54N 24°45'.52E

The Old City Marina was opened in the Admiralty Basin in 2010 with over 60 finger berths for boats up to 18m in 4m. Some visitors' berths but very expensive by Estonian and Baltic standards. Well sheltered and close to the heart of the Old City, shopping and facilities with all the usual marina services. 24 hour security. Entry and exit are controlled by lights but clear with Port Control VHF Ch 14.

Details from www.oldcitymarina.com or ☎+372 631 8085.

Services for yachts

Washing machine (no dryer) in room beside toilets. Key from harbour office.

~~Add to first paragraph: A washing machine (no dryer) is available at the TOP Marina but is inconveniently sited on an upper floor some distance along a corridor.~~



Old City Marina looking towards Old Tallinn G & F Cattell

Page 358 Pirita

General Facilities WiFi now available at most berths in TOP marina.

Appendix

Page 363 Firing Practice Areas

For Germany please see page 23.

Page 367 Forecasts for Finnish waters in English

There have been some changes to the VHF channels around the Åland Islands and Archipelago Sea. See Turku or Stockholm Radio websites for details.

Page 368 Sweden

List of Radio stations

Line 1: after West coast: delete (plus many other areas)

Line 6: highlight East coast.

Stockholm Radio broadcast on VHF (1st May to 30th Sept) very useful coastal areas forecasts covering next 24/48 hours updated 3 times a day. Broadcasts are in Swedish but easy to follow if you can master Swedish numbers 1-15 and compass points (for wind direction). See www.stockholmradio.se for times and details.

Page 369 Weather Forecast areas and Navtex

On this map the Danish and German area (in red) No.1 has been omitted and should read 'South East Baltic'.

Page 371 Weather forecasts on the internet

Please add www.foreca.fi for Finland as the sister site to www.foreca.se for Sweden and www.fmi.fi which updates twice daily Shipping Forecasts in English for Finnish waters.

Page 373 Index

Col 1: Firing practice areas, should read 363

Page 374 Latvia

Delete 232

Mike Redfern, February 2015